



**THE NETHERLANDS
(N E D E R L A N D)**



COMMUNICATION

Concerning ⁽¹⁾:

- approval granted
- ~~- approval extended~~
- ~~- approval refused~~
- ~~- approval withdrawn~~
- ~~- production definitely discontinued~~

of a type of device pursuant to Regulation number 7.

Approval number: E4-7R-0212962

Extension number: 00

Approval mark:

- 01 2a
- 02 RID
- 02 S1
- 02 IB



→

12962

*Indication of the approval mark for the device on the right side.
The left side shall be symmetrical.*

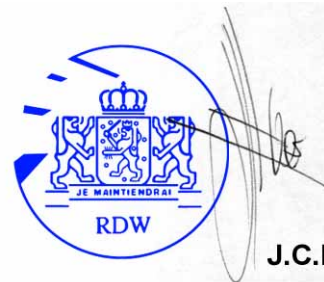
- | | | |
|----|--|--|
| 1. | Trade name or mark of the device | : DEPO |
| 2. | Manufacturer's name for the type of device | : 444-1930-XR/L |
| 3. | Manufacturer's name and address | : DEPO AUTO PARTS IND. CO., LTD.
No. 20-3, Nan Shih Lane, Tou Nan Li,
Lu Kang Chen, Chang Hua Hsien, Taiwan,
R.O.C. |
| 4. | If applicable, name and address of the manufacturer's representative | : Not applicable |
| 5. | Submitted for approval on | : January 4 to June 24, 2008 |



6. Technical service responsible for conducting approval tests : TÜV Rheinland Kraftfahrt GmbH
Technologiezentrum Verkehrssicherheit
Typprüfstelle Fahrzeuge/Fahrzeugteile
Postfach 91 09 51
D-51101 Köln / Germany
7. Date of report issued by that service : October 27, 2008
8. Number of report issued by that service : 84-R7-00043/08
9. Concise description :
- By category of lamp : Rear position lamp: R1D
Stop lamp: S1
- For mounting either outside or inside or both ⁽¹⁾ : Outside ~~or inside or both~~
- Colour of light emitted : Red/~~white~~ ⁽¹⁾
- Number, category and kind of light source(s) : Rear position lamp: One P21W filament lamp
Stop lamp: 23 LEDs
- Voltage and wattage : Rear position lamp: 13.5V/15.1W
Stop lamp: 12V/2.8W
- Light source module specific identification code : Not applicable
- Only for limited mounting height of equal to or less than 750 mm above the ground : ~~Yes~~/no
- Geometric conditions of installation and relating variations, if any : Refer to the drawing of the information folder
- Application of an electronic light source control gear/variable intensity control : Yes
- (a) being part of the lamp : ~~Yes~~/no
- (b) being not part of the lamp : Yes/~~no~~
- Input voltage(s) supplied by an electronic light source control gear/variable intensity control : 10.7V (Vrms) and the frequency is 80Hz by PWM (Pulse-width Modulation)
- Electronic light source control gear/variable intensity control manufacturer and identification number (when the light source control gear is part of the lamp but is not included into the lamp body) : Manufacturer name: Jordan
Identification number: 444-1930
- Variable luminous intensity : ~~Yes~~/no
10. Position of the approval mark : On the housing of the lamp
11. Reason(s) for extension (if applicable) : Not applicable
12. Approval : ~~Granted/extended/refused/withdrawn~~ ⁽¹⁾



13. Place : Zoetermeer
14. Date : 04-NOV-2008
15. Signature :



J.C.M. Hoes

16. The list of documents deposited with the Administrative Service which has granted approval is annexed to this communication and may be obtained on request.

⁽¹⁾ Strike out what does not apply.

Type : 444-1930-XR/L
Manufacturer : DEPO AUTO PARTS IND. CO., LTD.

TEST REPORT

according to ECE-Regulation

Uniform provisions concerning the approval of front and rear position (side) lamps, stop-lamps and end-outline marker lamps for power-driven vehicles and their trailers

No.: **ECE-R7**

including all amendments until

No.: **02 series of amendments, suppl. 13**

Previously granted	
ECE – approval	: --

Structure of report:

0. General information
1. Test object(s) and general test information
2. Test minutes
3. Remark concerning tested object(s)
4. Appendices
5. Statement of conformity

The Test Report shall be reproduced and published in full by the client only. It shall however be reproduced partially with the written permission of the Testing Laboratory only.

Type : 444-1930-XR/L
Manufacturer : DEPO AUTO PARTS IND. CO., LTD.

0. General information

- 0.1. Trade mark or trade name of the lamp : DEPO
- 0.2. Manufacturer's name for the type of the lamp : 444-1930-XR/L
- 0.3. Name and address of the manufacturer : DEPO AUTO PARTS IND. CO., LTD.
No. 20-3, Nan Shih Lane, Tou Nan Li,
Lu Kang Chen, Chang Hua Hsien, Taiwan, R.O.C.
- 0.4. Name and address of the manufacturer's authorised representative : Not applicable
- 0.5. No. of information document : 444-1930-X-00
date of issue : January 4, 2008
date of last amendment : --

Type : 444-1930-XR/L
Manufacturer : DEPO AUTO PARTS IND. CO., LTD.

1. Test object(s) and general test information

1.1. Test object(s)

- Identification no. : Not applicable
- Model : 444-1930-XR/L
- Remark :
 - Rear position lamp and stop lamp
 - The rear position lamp shall be used with the electronic light source control gear (not included in the lamp body and supplied by Jordan)
 - 23 LEDs as non-replaceable light sources for stop lamp

1.2. General test information

- 1.2.1 Order issued by : --
(if different from manufacturer)
- 1.2.2 Test object received on : --
- 1.2.3 Test date : January 4 to June 24, 2008
- 1.2.4 Test site : Lu-Kang / Taiwan
- 1.2.5 Remark : The results of the test refer exclusively to the objects mentioned under point 1.1. of this report.

Type : 444-1930-XR/L
Manufacturer : DEPO AUTO PARTS IND. CO., LTD.

2. Test minutes

2.1. Test facilities : The measurement equipment used was in compliance with the test requirements.

2.2. Test results : ~~The lamp has been tested according to the amendments mentioned in Appendix 0. The photometric values were carried over from the basic report.~~

Markings : The trade mark is marked clearly legible and indelible on the housing of the lamp.

The filament lamp type of rear position lamp is clearly legible and indelible marked on the housing of the lamp. The rated voltage and rated wattage are clearly legible and indelible marked on the housing of the lamp.

The manufacturer's name and the identification number of the electronic light source control gear is on the housing of the lamp.

Space for the approval mark and for the additional symbols is provided on the housing of the lamp.

2.3. General specifications : The lamp is designed and made that under normal use their satisfactory operation is ensured and they retain the required characteristics.

All measurements, photometric and colorimetric, on stop lamp equipped with non-replaceable light sources (filament lamps and others) were made at ~~6.75V/13.5V/28.0V~~.

The colour of the light emitted inside the field of the light distribution grid defined in paragraph 2 of Annex 4 is within the limits of the coordinates prescribed in Annex 5 of the Regulation.

2.4. Photometric tests : The photometric measurement of rear position lamp, using an electronic light source control gear is made at the voltage declared by the lamp manufacturer. The input voltage to the electronic light control gear is 13.5V.

Type : 444-1930-XR/L
Manufacturer : DEPO AUTO PARTS IND. CO., LTD.

The light intensity of stop lamp was measured after 1 minute burning period and after 30 minutes burning in reference axis. The distribution of the light intensity after 1 minute burning period was calculated using the ratio of the two described measurements. The light intensity and its distribution are in compliance with the requirement after 1 minute burning period and after 30 minutes burning period.

The light distribution angles and levels of intensity have been measured in accordance with Annex 4 of the Regulation, based on the manufacturer's indication of the centre of reference and axis of reference.

In case of different intensities of light emitted required by the Regulation, the evaluations are based on the most unfavourable limits specified.

The stop lamp contains more than one light source. The lamp complies with the requirement of footnote 4 to paragraph 6.1 of the Regulation.

~~The rear position lamp is reciprocally incorporated with the stop lamp. The ratio between the luminous intensities of the two lamps when turned on simultaneously and the intensity of the position lamp when turned on alone is greater than 5:1 in the field required.~~

Type : 444-1930-XR/L
 Manufacturer : DEPO AUTO PARTS IND. CO., LTD.

Results of photometric tests of the rear position lamp

distribution of the intensity of the lamps in [cd]								
horizontal angle		L20°	L10°	L5°	V	R5°	R10°	R20°
vertical angle required minimum intensity	U10°			0.8		0.8		
	U5°	0.4	0.8		2.8		0.8	0.4
	H		1.4	3.6	4	3.6	1.4	
	D5°	0.4	0.8		2.8		0.8	0.4
	D10°			0.8		0.8		
vertical angle sample no. 1 (left side)	U10°			3.1		3.9		
	U5°	2.3	3.6		5.3		5.0	3.1
	H		3.6	4.6	5.5	5.7	5.0	
	D5°	2.3	3.8		6.0		4.7	3.2
	D10°			4.2		4.5		
vertical angle sample no. 2 (right side)	U10°			3.4		3.1		
	U5°	2.3	3.6		4.2		3.0	2.1
	H		3.6	4.5	4.3	3.7	3.0	
	D5°	2.1	3.3		3.9		2.9	2.0
	D10°			3.6		3.0		

	sample no. 1	sample no. 2	allowable maximum	required minimum
maximum intensity [cd]	6.1	5.0	8.5	--
minimum inten- sity in the field defined in An- nex 1 of the Re- gulation [cd]	0.21	0.18	--	0.05

Type : 444-1930-XR/L
 Manufacturer : DEPO AUTO PARTS IND. CO., LTD.

Results of photometric tests of the stop lamp

[measured after 1 minute burning period when all light sources lit]

	light intensity of the lamps in reference axis [cd]	allowable maximum	required minimum
sample no. 1 (left side)	147.6	260	60
sample no. 2 (right side)	131.4	260	60

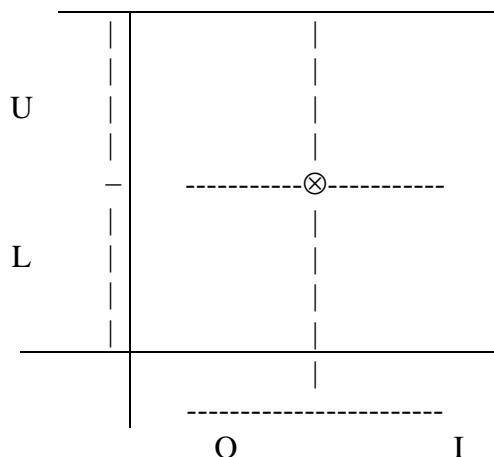
[measured after 30 minutes burning period when all light sources lit]

distribution of the intensity of the lamps in [cd]								
horizontal angle		L20°	L10°	L5°	V	R5°	R10°	R20°
vertical angle required minimum intensity	U10°			12		12		
	U5°	6	12		42		12	6
	H		21	54	60	54	21	
	D5°	6	12		42		12	6
	D10°			12		12		
vertical angle sample no. 1 (left side)	U10°			58.6		61.6		
	U5°	21.9	59.5		101.1		67.9	25.5
	H		70.5	105.6	129.0	115.0	84.3	
	D5°	22.3	64.9		119.3		82.7	28.3
	D10°			69.4		80.2		
vertical angle sample no. 2 (right side)	U10°			74.8		81.1		
	U5°	24.1	67.5		115.8		80.9	27.6
	H		68.1	98.9	122.7	120.0	85.6	
	D5°	22.0	57.4		100.9		74.3	28.5
	D10°			52.2		58.3		

	sample no. 1	sample no. 2	allowable maximum	required minimum
maximum intensity [cd]	129.9	122.7	185	--
minimum intensity in the field defined in Annex 1 of the Regulation [cd]	0.80	0.64	--	0.3

Type : 444-1930-XR/L
 Manufacturer : DEPO AUTO PARTS IND. CO., LTD.

- 2.5. Illuminating surface** : Vertical and horizontal outlines of the illuminating surface of the light-signalling device in relation to the centre of reference and in accordance with Annex 3 of Regulation No. 48:



function	upper boundary (U) [mm]	lower boundary (L) [mm]	outer boundary (O) [mm]	inner boundary (I) [mm]
rear position lamp	16	10	34	68
stop lamp	20	23	40	31

- 2.6. Explanatory note** : This report describes the examination of the rear position lamp and stop lamp as a part of a lamp device.

For the examination of the other lamp of the device, refer to the following report:

Type of lamp	Test Report No.
Rear retro reflector	84-R3-00041/08
Rear direction indicator	84-R6-00042/08

- 2.7. Variants and components** : Not applicable

Type : 444-1930-XR/L
Manufacturer : DEPO AUTO PARTS IND. CO., LTD.

3. Remark concerning tested object(s)

All versions of the lamp type as stated in the information document are covered with the tested lamp version(s) and test object(s) respectively.

4. Appendices

0 List of modifications

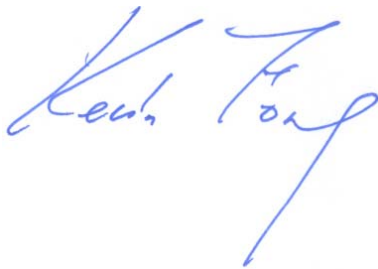
1 Information folder No. : 444-1930-X-00 (2 pages)
(excluding drawings)

5. Statement of conformity

The above mentioned information folder and the type described in that comply with the requirements mentioned on page 1.

Cologne, October 27, 2008

BL/KFO



M.S.M.E. K. Fong

Type : 444-1930-XR/L
Manufacturer : DEPO AUTO PARTS IND. CO., LTD.



List of modifications

Appendix 0

Correction of : --

Modification of : --

Addition of : --

Deletion of : --

Application Type: 444-1930-XR/L**First Application Date: January 4, 2008**

Application regulation:	ECE-R3-02 (class IB), ECE-R6-01 (category 2a), ECE-R7-02
--------------------------------	--

1. Light Sources

Function	Light Color	Rated Voltage	Rated Wattage	Category (ECE-R37)
Rear retro reflector	Red	N/A	N/A	N/A
Rear position lamp	Red	13.5V	15.1W	P21W
Function	Light Color	Rated Voltage	Rated Wattage	Non-Replaceable Light Source
Rear direction indicator	Amber	12V	3.6W	20 LEDs
Stop lamp	Red	12V	2.8W	23 LEDs

2. Construction and Material

Construction	Material	Remark
Outer lens	PMMA	Red (Rear retro reflector, Rear position lamp and stop lamp)
		Colourless (Rear direction indicator: Version A)
		Smoke (Rear direction indicator: Version B)
Inner lens A	PC	Colourless (Stop lamp)
Inner lens B	PMMA	Four black stripes with three white stripes (Rear position lamp)
Inner lens C	PC	Colourless (Rear position lamp)
Inner lens D	PC	Green (Rear direction indicator)
Housing	Plastic	Aluminum vacuum coating on the inner side without base painting
Heat insulation plate E	Metal	
Reflector	Plastic	Aluminum vacuum coated (Rear direction indicator)
Reflector	Plastic	Aluminum vacuum coated (Rear position lamp and stop lamp)

2.1. The rear position lamp uses an electronic light source control gear ~~/variable intensity control~~

2.2. The application of an electronic light source control gear ~~/variable intensity control~~:

~~being part of the lamp~~ / being not part of the lamp (supplied by Jordan)

2.3. The name of the manufacturer and its identification number of the electronic light source control gear:

Name: Jordan Car Material Limited.

Identification No.: 444-1930

2.4. Specification of the electronic light source control gear:

- input voltage to the electronic light source control gear: 13.5V

- input voltage supplied by the electronic light source control gear: 10.7V (V_{rms}) & $f=80\text{Hz}$ by PWM

3. The locations of the trade mark(s), the lamp designation mark(s) and the approval mark(s) are indicated in the following drawing(s) attached:

E444-1930X, E444-1930-L1, E444-1930-L2, E444-1930-L3

4. Name and address of manufacturer:

DEPO AUTO PARTS IND. CO., LTD.

No. 20-3, Nan Shih Lane, Tou Nan Li,

Lu Kang Chen, Chang Hua Hsien, Taiwan, R.O.C.



5. Name and address of representative of manufacturer:

Not applicable

6. Remarks

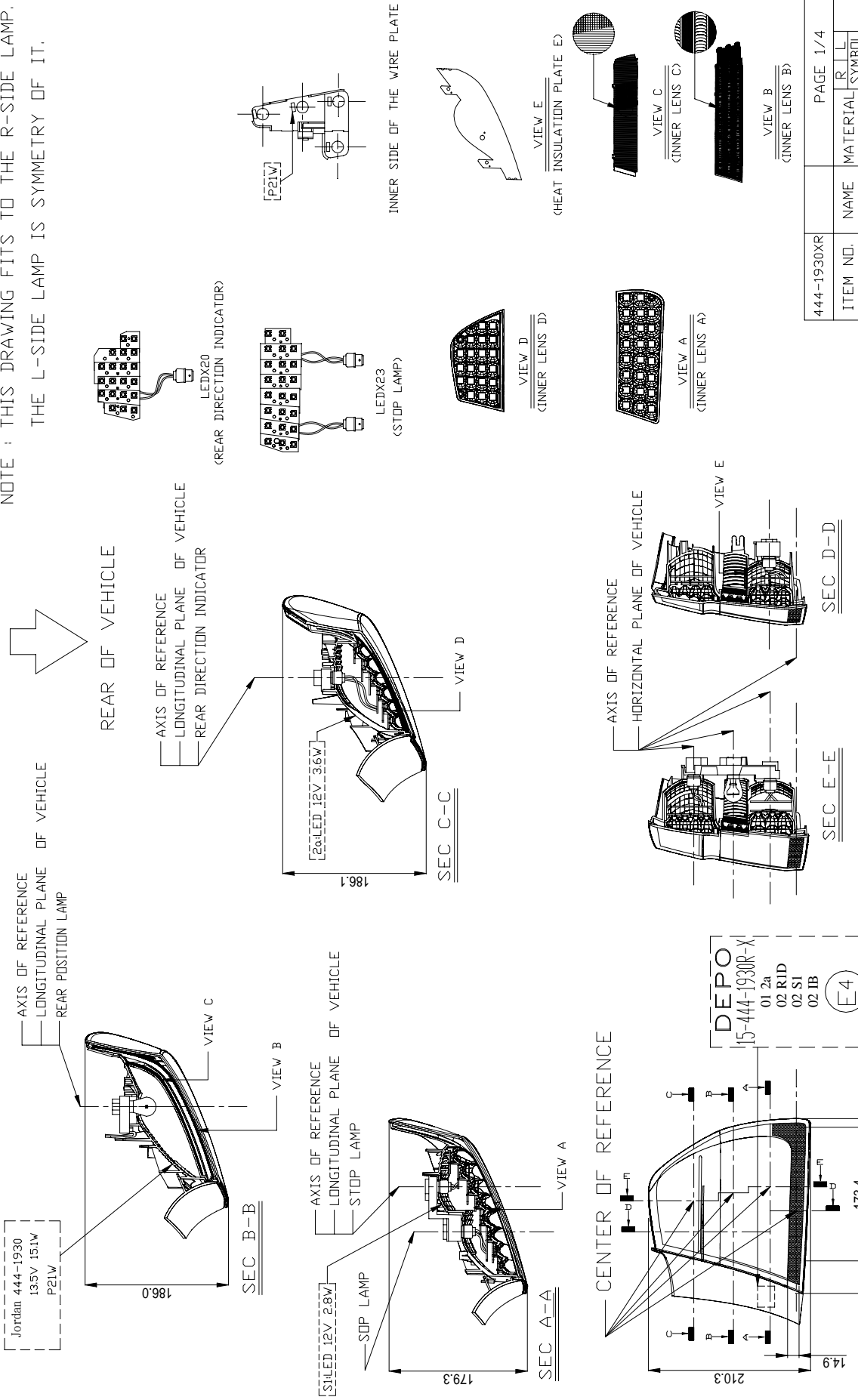
Date: January 4, 2008

Place: Chang Hua

Person in charge: Young-Chieh Chang



NOTE : THIS DRAWING FITS TO THE R-SIDE LAMP.
THE L-SIDE LAMP IS SYMMETRY OF IT.

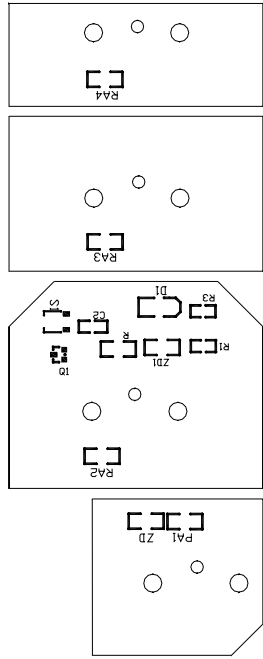


444-1930XR	PAGE 1/4	
ITEM NO.	NAME	MATERIAL SYMBOL
DRAWER 田端 進	970107	PROJECTION
DESIGN	SCALE	UNITS
CHECK	DRAWING	MM
	DRAWING NO.	E444-1930X

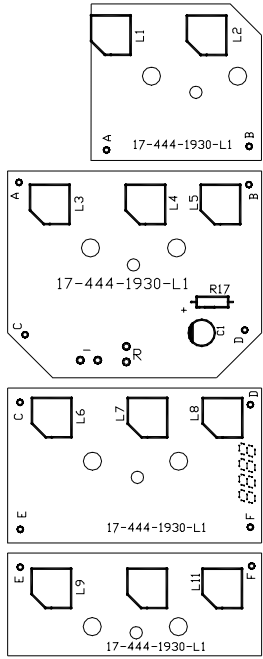
VERSION A: COLOURLESS OUTER LENS
VERSION B: SMOKE OUTER LENS
(FOR REAR DIRECTION INDICATOR)



NOTE : THIS DRAWING FITS TO THE R-SIDE LAMP.
THE L-SIDE LAMP IS SYMMETRY OF IT.

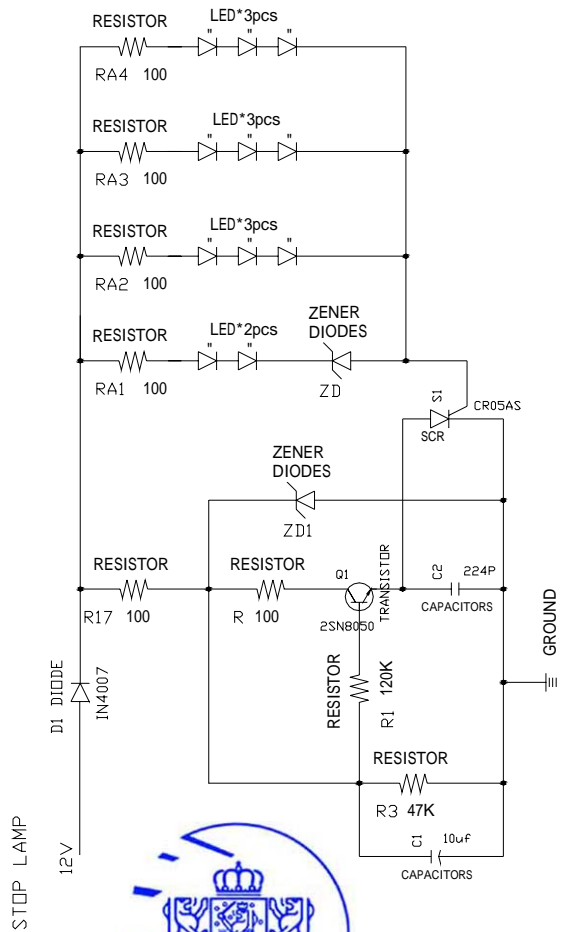
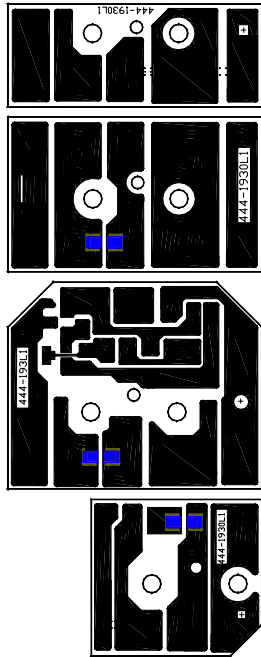


BACK PART



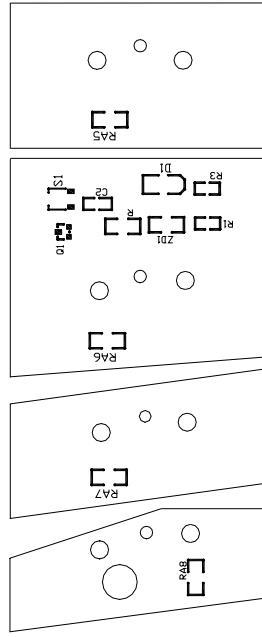
TOP PART

FUNCTION : STOP LAMP (OUTER)

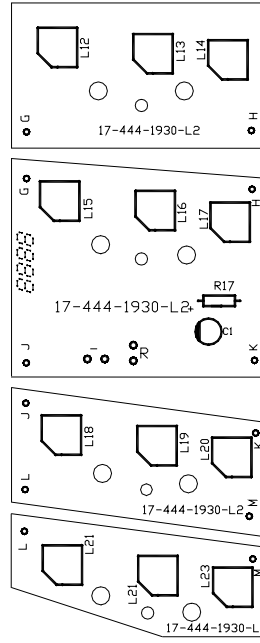


444-1930XR		PAGE 2/4	
ITEM NO.	NAME	MATERIAL	UNITS
DRAWER	甲端進	970107	mm
DESIGN		SCALE	DRAWING
CHECK		DRAWING	DRAWING
NO.	MODIFY	DESCRIBE	DATE
			MODIFY
			CHECK
			NO.
			E444-1930-L1

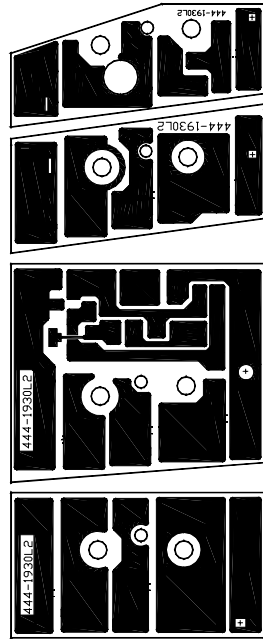
NOTE : THIS DRAWING FITS TO THE R-SIDE LAMP.
THE L-SIDE LAMP IS SYMMETRY OF IT.



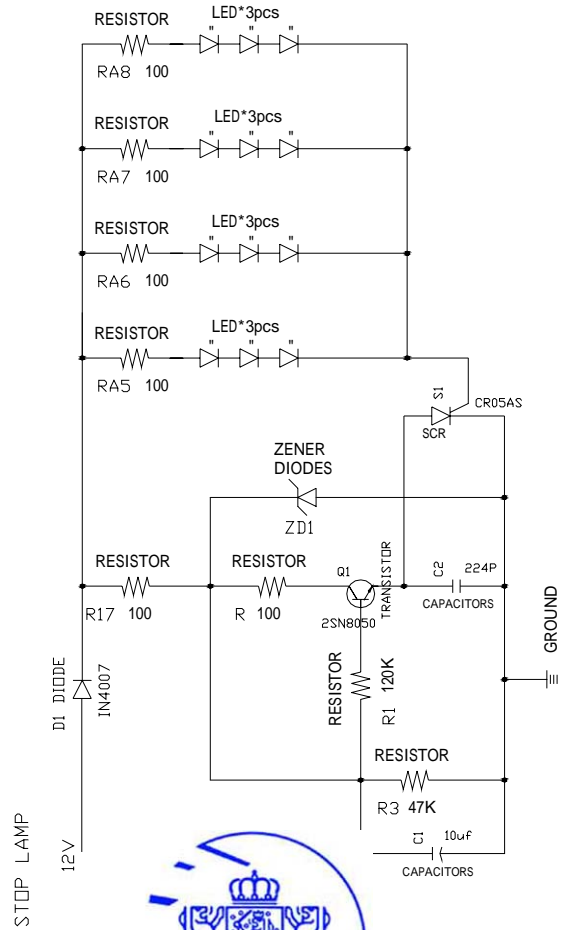
BACK PART



TOP PART



FUNCTION : STOP LAMP (INNER)



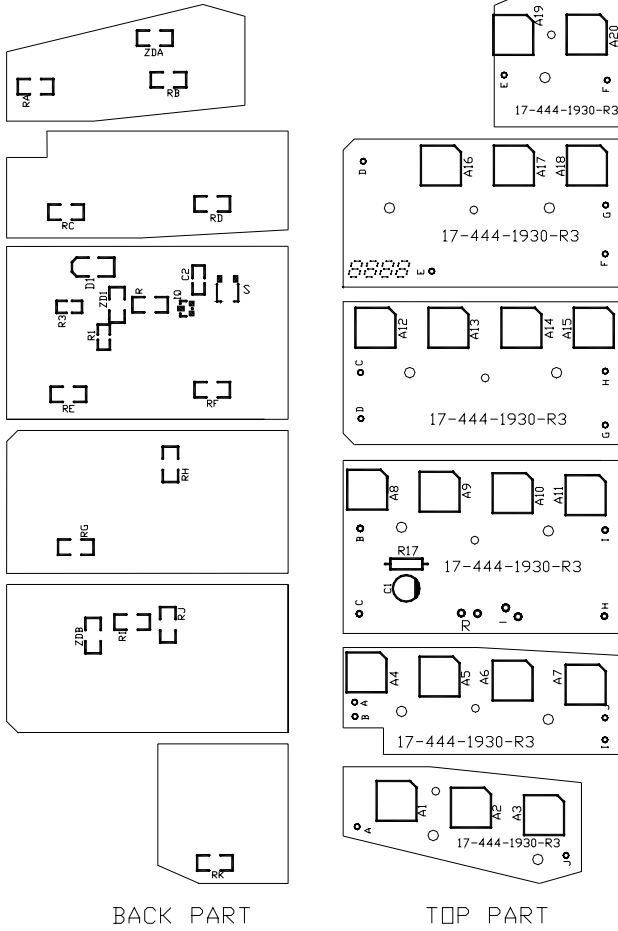
STOP LAMP



444-1930XR		PAGE 3/4	
ITEM NO.	NAME	MATERIAL	R L L
DRAWER 甲瑞雄	970107	PROJECTION	UNITS
DESIGN	SCALE	:	mm
CHECK	DRAWING		
NO.	MODIFY DESCRIBE	DATE MODIFY	CHECK
			DRAWING NO. E444-1930-L2

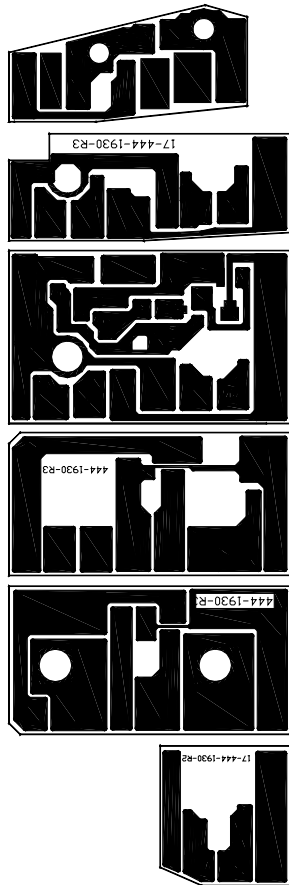
NOTE : THIS DRAWING FITS TO THE R-SIDE LAMP.
THE L-SIDE LAMP IS SYMMETRY OF IT.

FUNCTION : REAR DIRECTION INDICATOR

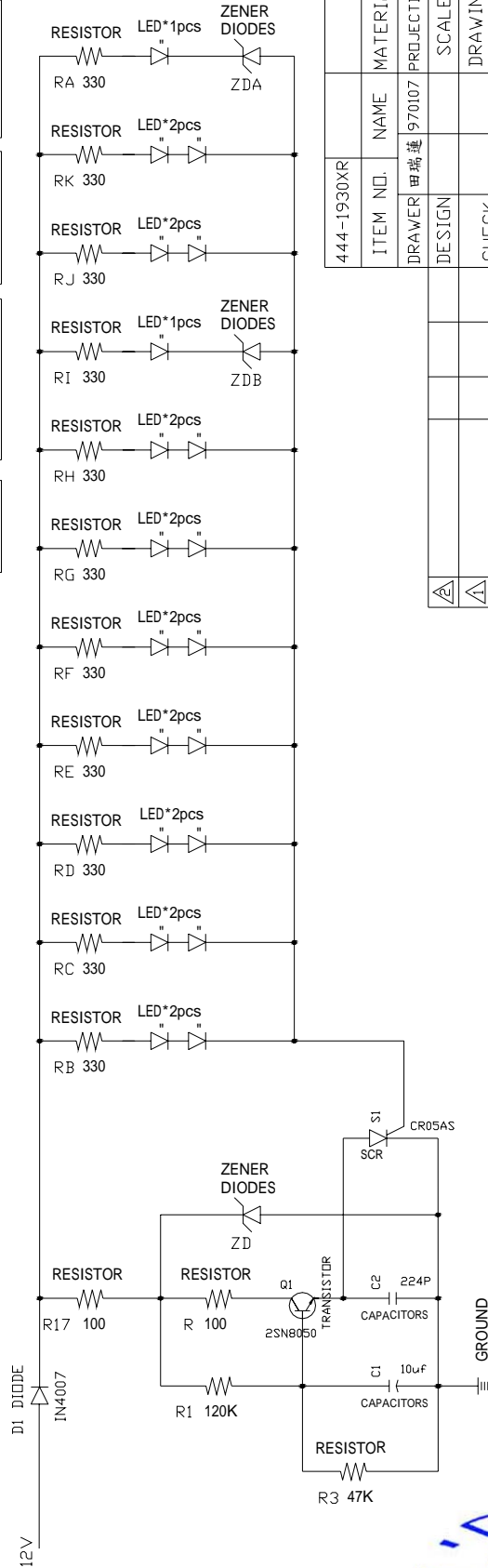


BACK PART

TOP PART



REAR DIRECTION INDICATOR



444-1930XR		PAGE 4/4	
ITEM NO.	NAME	MATERIAL	R L SYMBOL
DRAWER	甲瑞雄	970107	PROJECTION
DESIGN		SCALE	UNITS
CHECK		DRAWING	m
NO.	MODIFY	DATE	DRAWING NO.
	DESCRIBE		E444-1930-L3

